

Fortunato Innuzzo OLEODINAMICA



U.S. Department of Labor
MSHA
Mine Safety & Health Administration

GENERAL CATALOGUE



CAT.2022

CECK VALVES

CHECK VALVES

SERIES WKKVU

Free flow in one direction and restricted in reverse
Used to keep a hydraulic system pressurised



REF	thread	MAX FLOW L/min	MAX Pressure [bar]	Cracking pressure [bar]		
10165	1/8	3	350	0,4/0,7		
10166	1/4	20	350	0,4/0,7		
10167	3/8	45	350	0,4/0,7		
10168	1/2	70	350	0,4/0,7		
10169	3/4	110	350	0,4/0,7		
10170	1"	160	350	0,4/0,7		
10171	1" 1/4	250	300	0,7/1		
10172	1" 1/2	350	300	0,7/1		

INTEGRATED CHECK VALVES

SERIES WKKVUI

Free flow in one direction and restricted in reverse
nel senso opposto.



REF	thread	MAX FLOW L/min	MAX Pressure [bar]	Cracking Pressure [bar]		
10181	1/4	20	350	0,5		
10182	3/8	30	350	0,5		
10183	1/2	50	350	0,5		
10184	3/4	80	350	0,5		

ADJUSTABLE HOSE BURST VALVE

SERIES WKKVUBA

Valves used to prevent the uncontrolled descent of an actuator in the case of a hose burst.



REF	thread	MAX FLOW L/min	MAX Pressure [bar]			
10190	1/4	20	350			
10191	3/8	50	350			
10192	1/2	80	350			
10193	3/4	140	350			
10194	1"	180	350			

ADJUSTABLE HOSE BURST VALVE DIN 2353

SERIES WKKVUBA DIN

Valves used to prevent the uncontrolled descent in caso di rottura della tubazione



REF	thread	MAX FLOW L/min	MAX Pressure [bar]			
10200	M16 -3/8	50	350			
10201	M22 -1/2	80	350			

MALE/MALE CHECK VALVE

SERIES WKKVUMM

Free flow in one direction and restricted in reverse
nel senso opposto.



REF	thread	MAX FLOW L/min	MAX Pressure [bar]			
10173	1/4	20	350			
10174	3/8	50	350			
10175	1/2	90	350			
10176	3/4	90	350			
10177	1"	250	320			
10178	1" 1/4	300	320			
10179	1" 1/2	350	320			
10180	2"	650	320			

HOSE BURST CARTRIDGE VALVES

SERIES WKKVUBA

Valves used to prevent the uncontrolled descent of an actuator in the case of a hose burst.



REF	thread	MAX FLOW L/min	MAX Pressure [bar]			
10185	1/4	20	350			
10186	3/8	50	350			
10187	1/2	80	350			
10188	3/4	140	350			
10189	1"	180	350			

HOSE BURST CARTRIDGE VALVES MALE/FEMALE

SERIES WKKVUBA

Valves used to prevent the uncontrolled descent of an actuator in the case of a hose burst.



REF	thread	MAX FLOW L/min	MAX Pressure [bar]			
10195	1/4	20	350			
10196	3/8	50	350			
10197	1/2	80	350			
10198	3/4	140	350			
10199	1"	180	350			

SHUTTLE VALVE

SERIES WKKVU2P

Used to select higher pressure between two pressure line



REF	thread	MAX FLOW L/min	MAX Pressure [bar]			
10202	1/4	30	450			
10203	3/8	45	450			
10204	1/2	70	450			
10205	3/4	110	350			
10206	1	150	300			

FLOW REGULATOR VALVES

BARREL TYPE UNIDIRECTIONAL FLOW CONTROL VALVES

SERIES WKKVRF

Used to adjust speed of actuators in one directions.



REF	thread	MAX FLOW L/min	MAX Pressure [bar]	Craking Pressure [bar]		
10207	1/4	20	300	0,5		
10208	3/8	45	300	0,5		
10209	1/2	70	300	0,5		
10210	3/4	110	250	0,5		
10211	1"	160	250	0,5		
10212	1" 1/4	210	230	0,5		
10213	1" 1/2	280	230	0,5		

BARREL TYPE BIDIRECTIONAL FLOW CONTROL VALVES

SERIES WKKVRb

Used to adjust speed of actuators in both directions.



REF	thread	MAX FLOW L/min	MAX Pressure [bar]			
10214	1/4	20	300			
10215	3/8	45	300			
10216	1/2	70	300			
10217	3/4	110	250			
10218	1"	160	250			

90° FLOW REGULATOR VALVE

SERIES WKKVRFU 90°

Used to adjust speed of actuators in one di lasciarlo libero nell'altra.



REF	thread	MAX FLOW L/min	MAX Pressure [bar]	Craking Pressure [bar]		
10219	1/4	20	300	0,5		
10220	3/8	45	300	0,5		
10221	1/2	70	300	0,5		
10222	3/4	110	250	0,5		
10223	1"	160	250	0,5		

90° BIDIRECTIONAL FLOW REGULATOR VALVE

SERIES WKKVRFB 90°

Used to adjust speed of actuators in both le direzioni



REF	thread	MAX FLOW L/min	MAX Pressure [bar]	Craking Pressure [bar]		
10224	1/4	20	300	0,5		
10225	3/8	45	300	0,5		
10226	1/2	70	300	0,5		
10227	3/4	110	250	0,5		
10228	1"	160	250	0,5		

3 WAY FLOW CONTROLL VALVE

SERIES WKKVPR3

Enables to keep the flow P constant to a required setting, independent of pressure or inlet flow.



REF	thread	MAX FLOW ENTRATA L/min	P.Max L/min REGOLATA	MAX Pressure [bar]		
10229	3/8	60	50	350		
10230	1/2	80	60	350		
10231	3/4	120	100	350		
10232	1"	200	170	350		

3 WAY FLOW CONTROLL VALVE WITH EXCESS TO TANK

SERIES WKKVRFp3

Enables to keep the flow P constant to a required setting, independent of pressure or inlet flow. Excess flow is drainet to T.



REF	thread	MAX FLOW ENTRATA L/min	P.Max L/min REGOLATA	MAX Pressure [bar]		
10233	3/8	60	50	350		
10234	1/2	80	60	350		
10235	3/4	120	100	350		

2 WAY FLOW DIVIDER

2 WAY FLOW DIVIDER

SERIES WKKV-EQ

Used when two equal actuators, that are not mechanically coupled, supplied by the same pump and controlled by a single valve, must move simultaneously



REF	thread P	thread A - B	Portata Min L/min	MAX FLOW L/min	Working P. [bar]	Peak Pressure [bar]
10236	3/8	3/8	1	3	250	300
10237	3/8	3/8	3	6	250	300
10238	3/8	3/8	6	10	250	300
10239	3/8	3/8	10	20	250	300
10240	3/8	3/8	20	32	250	300
10241	1/2	3/8	25	40	250	300
10242	1/2	3/8	40	60	250	300
10243	1/2	3/8	60	80	250	300

2 WAY STEEL FLOW DIVIDER

SERIES WKKDFL

Used when two equal actuators, that are not mechanically coupled, supplied by the same pump and controlled by a single valve, must move simultaneously



REF	thread P	thread A - B	Portata Min L/min	MAX FLOW L/min	Working P. [bar]	Peak Pressure [bar]
10244	3/8	3/8	1	3	250	300
10245	3/8	3/8	3	6	250	300
10246	3/8	3/8	6	10	250	300
10247	3/8	3/8	10	20	250	300
10248	3/8	3/8	20	32	250	300
10249	1/2	3/8	25	40	250	300
10250	1/2	3/8	40	60	250	300
10251	1/2	3/8	60	80	250	300

PILOT OPERATED CHECK VALVES

DOUBLE PILOT OPERATED CHECK VALVES

SERIES WKKVBPDE

Used to block the cylinder in both the direction. Flow is free in one direction and blocked in the reverse until pilot pressure is applied.



REF	thread V1-V2-C1-C2	PILOT RATIO	MAX FLOW L/min	MAX Pressure[bar]	Craking Pressure [bar]
10252	1/4	1:5,5	20	350	4
10253	3/8	1:5,5	35	350	3
10254	1/2	1:5	50	350	6
10255	3/4	1:4	100	300	2

DOUBLE PILOT OPERATED CHECK VALVES DIN 2353

SERIES WKKVBPDE

Used to block the cylinder in both the direction. Flow is free in one direction and blocked in the reverse until pilot pressure is applied.



REF	thread V1 - V2	thread C1 - C2	PILOT RATIO	MAX FLOW L/min	MAX Pressure[bar]	Craking Pressure [bar]
10256	1/4	12L	1:5,5	20	350	4
10257	3/8	12L	1:5,5	35	350	3
10258	1/2	15L	1:5	50	350	6

DOUBLE PILOT OPERATED CHECK VALVES - TYPE A

SERIES WKKVBPDE-A

Used to block the cylinder in both the direction. Flow is free in one direction and blocked in the reverse until pilot pressure is applied.



REF	thread V1-V2-C1-C2	PILOT RATIO	MAX FLOW L/min	MAX Pressure[bar]	Craking Pressure [bar]
10259	1/4	1:5,5	20	350	4,5
10260	3/8	1:5,5	35	350	4,5
10261	1/2	1:4,5	55	350	5,5
10262	3/4	1:3,7	100	300	3

DOUBLE PILOT OPERATED CHECK VALVES - FLANGEABLE

SERIES WKKVBPDE-FL

Used to block the cylinder in both the direction. Flow is free in one direction and blocked in the reverse until pilot pressure is applied.



REF	thread V1 - V2	C1 - C2	PILOT RATIO	MAX FLOW L/min	MAX Pressure[bar]	Craking Pressure [bar]
10263	3/8	6,5	1:5,5	30	350	4,5
10264	1/2	11	1:4,5	55	350	5,5
10265	3/8	6	1:5,5	30	350	4,5

SINGLE PILOT OPERATED CHECK VALVES

SERIES WKKVBPSE

Used to block the cylinder in one direction. Flow is free in one direction and blocked in the reverse until pilot pressure is applied.



REF	thread V1-V2-C1-C2	PILOT RATIO	MAX FLOW L/min	MAX Pressure[bar]	Craking Pressure [bar]
10266	1/4	1:5,5	20	350	4
10267	3/8	1:5,5	35	350	3
10268	1/2	1:5	50	350	6
10269	3/4	1:4	100	300	2

3 WAY SINGLE PILOT OPERATED CHECK VALVES, IN LINE

SERIES WKKVBPSL

Used to block the cylinder in one direction. Flow is free in one direction and blocked in the reverse until pilot pressure is applied. Designed for in line mounting.



REF	thread V - C	thread Pil	PILOT RATIO	MAX FLOW L/min	MAX Pressure[bar]	Craking Pressure [bar]
10270	1/4	1/4	1:9,8	20	350	2,5
10271	3/8	1/4	1:6,5	30	300	5
10272	1/2	1/4	1:4,6	45	300	3
10273	3/4	1/4	1:4,4	80	250	0,5
10274	1"	1/4	1:3,5	120	220	1

OVERCENTRE VALVES

SINGLE OVERCENTRE VALVES - TYPE A

SERIES WKKVBCD SE A

Used to control the actuator movements and block in one direction
In order to have the descent of a load under control.



REF	thread V1-V2-C1-C2	PILOT RATIO	MAX FLOW L/min	MAX Pressure[bar]		
10275	1/4	1:4,5	20	350		
10276	3/8	1:4,5	40	350		
10277	1/2	1:4,5	60	350		
10278	3/4	1:5,5	95	350		
10279	1"	1:5,5	160	350		

SINGLE OVERCENTRE VALVES - FLANGEABLE

SERIES WKKVBCD SE FL

Used to control the actuator movements and block in one direction
In order to have the descent of a load under control.



REF	thread V1 - V2 - C1	C2	PILOT RATIO	MAX FLOW L/min	MAX Pressure[bar]	
10280	3/8	9	1:4,5	40	350	
10281	1/2	9	1:4,5	60	350	

SINGLE OVERCENTRE VALVES

FIXED BY SCREW

SERIES WKKVBCD SE FLV

Used to control the actuator movements and block in one direction
In order to have the descent of a load under control.



REF	thread V1-V2-C1-C2	PILOT RATIO	MAX FLOW L/min	MAX Pressure[bar]		
10282	3/8	1:4,5	40	350		
10283	1/2	1:4,5	60	350		

SINGLE OVERCENTRE VALVES

FOR CLOSED CENTRE

SERIES WKKVBCD SE CC

Used to control the actuator movements and block in one direction
In order to have the descent of a load under control.
This valve is not sensitive to back pressure.



REF	thread V1-V2-C1-C2	PILOT RATIO	MAX FLOW L/min	MAX Pressure[bar]		
10284	3/8	1:3,1	35	350		
10285	1/2	1:3,1	50	350		
10286	3/4	1:5,5	105	350		

SINGLE OVERCENTRE VALVES - TYPE A

FOR CLOSED CENTRE

SERIES WKKVBCD SE A CC

Used to control the actuator movements and block in one direction
In order to have the descent of a load under control.
This valve is not sensitive to back pressure.



REF	thread V1-V2-C1-C2	PILOT RATIO	MAX FLOW L/min	MAX Pressure[bar]		
10287	3/8	1:4,5	40	350		
10288	1/2	1:4,5	60	350		

DOUBLE OVERCENTRE VALVES - TYPE A

SERIES WKKVBCD DE A

Used to control the actuator movements and block in both the direction
In order to have the descent of a load under control.



REF	thread V1-V2-C1-C2	PILOT RATIO	MAX FLOW L/min	MAX Pressure[bar]		
10288	1/4	1:4,5	20	350		
10289	3/8	1:4,5	40	350		
10290	1/2	1:4,5	60	350		
10291	3/4	1:5,5	95	350		
10292	1"	1:5,5	160	350		

DOUBLE OVERCENTRE VALVES - FLANGEABLE

SERIES WKKVBCD DE FL

Used to control the actuator movements and block in both the direction
In order to have the descent of a load under control.



REF	thread V1 - V2	C1 - C2	PILOT RATIO	MAX FLOW L/min	MAX Pressure[bar]	
10293	3/8	9	1:4,5	40	350	
10294	1/2	9	1:4,5	60	350	

DOUBLE OVERCENTRE VALVES

FIXED BY SREW

SERIES WKKVBCD DE FLV

Used to control the actuator movements and block in both the direction
In order to have the descent of a load under control.



REF	thread V1-V2-C1-C2	PILOT RATIO	MAX FLOW L/min	MAX Pressure[bar]		
10295	3/8	1:4,5	40	350		
10296	1/2	1:4,5	60	350		

DOUBLE OVERCENTRE VALVES FOR CLOSED CENTRE

SERIES WKKVBCD DE CC
Used to control the actuator movements and block in both the direction
In order to have the descent of a load under controll.
This valve is not sensitive to back pressure.



REF	thread V1-V2-C1-C2	PILOT RATIO	MAX FLOW L/min	MAX Pressure[bar]		
10297	3/8	1:3,1	35	350		
10298	1/2	1:3,1	50	350		
10299	3/4	1:5,5	105	350		

DOUBLE OVERCENTRE VALVES FOR CLOSED CENTRE

SERIES WKKVBCD DE A CC
Used to control the actuator movements and block in both the direction
In order to have the descent of a load under controll.
This valve is not sensitive to back pressure.



REF	thread V1-V2-C1-C2	PILOT RATIO	MAX FLOW L/min	MAX Pressure[bar]		
10300	3/8	1:4,5	40	350		
10301	1/2	1:4,5	60	350		

RELIEF VALVE

RELIEF VALVES SERIES WKKVMP L

The relief valve limits the maximum pressure.



REF	thread P - T	MAX FLOW L/min	MAX Pressure[bar]	Setting Range [bar]	STD Setting [bar]	Pressure Increase
10301	1/4	30	350	10 - 180	90	30
10302	3/8	40	350	10 - 180	90	30
10303	3/8	45	350	10 - 180	90	30
10304	1/2	70	350	10 - 180	90	30
10305	3/4	90	350	10 - 180	90	30

DIFFERENTIAL AREA RELIEF VALVES SERIES WKKVMPP

The relief valve provides overload protection in a fast accurate way.



REF	thread P - T	MAX FLOW L/min	Setting Range [bar]	STD Setting [bar]	Pressure Increase	
10306	3/4	120	50 - 400	180	80	
10307	1"	160	50 - 400	180	80	

DUAL CROSS LINE RELIEF VALVE

CROSS LINE RELIEF VALVES SERIES WKKVAU

Made up from two cross line relief, this valve is used to limit the pressure to a certain setting.



REF	thread V1 - V2	MAX FLOW L/min	MAX Pressure[bar]	Setting Range [bar]	STD Setting [bar]	Pressure Increase
10308	1/4	30	350	10 - 180	90	30
10309	3/8	45	350	10 - 180	90	30
10310	1/2	70	350	10 - 180	90	30
10311	3/4	110	350	10 - 180	90	30

SEQUENCE VALVES

DIRECT ACTING SEQUENCE VALVES SERIES WKKVS2C

Used to feed 2 cylinder in sequence.



REF	thread C - V	MAX FLOW L/min	MAX Pressure[bar]	Setting Range [bar]	STD Setting [bar]	Pressure Increase
10312	3/8	35	350	10 - 180	90	30
10313	1/2	70	350	10 - 180	90	30
10314	3/4	110	400	10 - 180	90	30

SEQUENCE VALVES WITH PRIMARY PRESSURE COMPENSATION SERIES WKKVSQAPP

Used to feed 2 cylinder in sequence.



REF	thread C - V	MAX FLOW L/min	MAX Pressure[bar]	Setting Range [bar]	STD Setting [bar]	Pressure Increase
10315	3/8	35	350	10 - 180	90	30
10316	1/2	70	350	10 - 180	90	30
10317	3/4	110	400	10 - 180	90	30

PRESSURE REDUCING VALVES

DIRECT ACTING PRESSURE REDUCING VALVE

SERIES WKKVRP

This valve maintains a constant downstream pressure irrespective of the upstream pressure.



REF	thread C - V	MAX FLOW L/min	MAX Pressure[bar]	Setting Range [bar]		
10318	3/8	30	350	30 - 165		
10319	1/2	30	350	30 - 165		

TWO PUMP HI-LOW UNLOADING VALVES

TWO PUMP HI-LOW UNLOADING VALVES

SERIES WKKVABP

This valve unloads the larger pump to tank once the pressure setting of BP has been reached.



REF	thread BP	thread AP	MAX FLOW L/min			MAX Pressure[bar]		
			AP	BP	T			
10320	3/8	1/4	20	40	60	300		
10321	1/2	3/8	30	50	80	350		
10322	3/4	1/2	40	80	120	350		

END OF STROKE VALVES

PUSH BUTTON END OF STROKE VALVES

SERIES WKKVF-NC

Used to open the inlet to a hydraulic circuit.



REF	thread C - V	MAX FLOW L/min	MAX Pressure[bar]			
13617	3/8	50	350			
13618	1/2	70	350			
13619	3/4	100	350			

PLOUGH OVERTURNING VALVES

DOUBLE ACTING PLOUGH OVERTURNING VALVES

SERIES WKKVARPDE

Designed for use on cylinder for reversible ploughs to obtain the automatic oil flow reversal and the reversal of the hydraulic cylinder which rotates the plough.



REF	thread PT	CYLINDERS INTERNAL	MAX EXCHANGE PRESSURE	MAX Pressure[bar]		
13612	3/8	40/50	250	400		
13613	3/8	60/80	250	400		
13614	3/8	80/100	250	400		
13615	3/8	100/110	250	400		
13616	3/8	110/130	250	400		

VALVOLE IN LINEA 2/2

ELETTROVALVOLA 2/2 NA
NORMALLY OPEN



REF	Q L/min	THREAD	P Max [bar]	volt
10323	40	3/8	280	12 DC
10324	40	3/8	280	24 DC
10325	40	3/8	280	220 AC
10326	70	1/2	250	12 DC
10327	70	1/2	250	24 DC
10328	70	1/2	250	220 AC

ELETTROVALVOLA 2/2 NC
NORMALLY CLOSED



REF	Q L/min	THREAD	P Max [bar]	volt
10329	40	3/8	280	12 DC
10330	40	3/8	280	24 DC
10331	40	3/8	280	220 AC
10332	70	1/2	250	12 DC
10333	70	1/2	250	24 DC
10334	70	1/2	250	220 AC

DIRECTIONAL VALVE

ELECTRIC DIRECTIONAL VALVE 3/8
P MAX 315 Bar WITH DRAIN



REF	Q L/min	ELEMENT Nr.	P Max [bar]	volt
10335	50	1	250	12 DC
10336	50	2	250	12 DC
10337	50	3	250	12 DC
10338	50	4	250	12 DC
10339	50	5	250	12 DC
10340	50	1	250	24 DC
10341	50	2	250	24 DC
10342	50	3	250	24 DC
10343	50	4	250	24 DC
10344	50	5	250	24 DC

ELECTRIC DIRECTIONAL VALVE 1/2
P MAX 315 Bar WITH DRAIN



REF	Q L/min	ELEMENT Nr.	P Max [bar]	volt
10345	90	1	250	12 DC
10346	90	2	250	12 DC
10347	90	3	250	12 DC
10348	90	1	250	24 DC
10349	90	2	250	24 DC
10350	90	3	250	24 DC

HAND PUMPS

S/A HAND PUMPS
DOUBLE ACTING FUNCTION



REF.	CC	P MAX
10351	12	380
10352	25	350
10353	45	280

D/A HAND PUMPS
DOUBLE ACTING FUNCTION



REF.	CC	P MAX
10354	12	380
10355	25	350
10356	45	280

HAND PUMPS TANK



REF.	LITERS
10357	1
10358	2
10359	3
10360	5
10361	7

S/A HAND PUMPS
WITH ROUND TANK



REF.	LITERS	CC
10363	4	12
10364	4	18
10365	4	25

IN - LINE FILTERS

CARTRIDGES SPIN-ON



REF.	THREAD	FILTRATION	D [mm]	L [mm]	FLOW L/MIN	
					IN	OUT
10601	3/4	10μ	98	145	16	64
10602	3/4	25μ	98	145	20	73
10603	3/4	30μ	98	145	30	80
10604	3/4	60μ	98	145	30	80
10605	3/4	90μ	98	145	30	80
10607	3/4	10μ	95	190	22	68
10608	3/4	25μ	95	190	30	80
10609	3/4	30μ	95	190	35	90
10610	3/4	60μ	95	190	35	90
10611	3/4	90μ	95	190	35	90
10613	1" 1/4	10μ	130	240	53	130
10614	1" 1/4	25μ	130	240	60	170
10615	1" 1/4	30μ	130	240	95	190
10616	1" 1/4	60μ	130	240	95	190
10617	1" 1/4	90μ	130	240	95	190
10619	1" 1/4	10μ	128	240	70	150
10620	1" 1/4	25μ	128	240	78	188
10621	1" 1/4	30μ	128	240	100	205
10622	1" 1/4	60μ	128	240	100	205
10623	1" 1/4	90μ	128	240	100	205

BODY FILTER



REF.	THREAD	ESECUTION
10625	3/4	SUCTION
10626	3/4	RETURN
10627	1" 1/4	SUCTION
10628	1" 1/4	RETURN

MONOBLOCK DIRECTIONAL CONTROL VALVES

1 WAY MONOBLOCK CONTROL VALVES



REF	HYDRAULIC FUNCTION	PORTS	Flow L/min	MAX Pressure[bar]	SPOOL TYPE	SPOOL CONTROL	NOTE	CARRY OVER
10686	SIMPLE ACTION	AB 3/8 PT 1/2	35	300		$1 \ 0 \ 2$ M W W 1 0 2		
10687	DOUBLE ACTION	AB 3/8 PT 1/2	35	300		$1 \ 0 \ 2$ M W W 1 0 2		
10688	SIMPLE ACTION	AB 3/8 PT 1/2	35	300		$1 \ 0 \ 2$ M W W 1 0 2	RIGHT IN	
10689	DOUBLE ACTION	AB 3/8 PT 1/2	35	300		$1 \ 0 \ 2$ M W W 1 0 2	RIGHT IN	

10690	SIMPLE ACTION	AB 3/8 PT 1/2	40	300		$1 \ 0 \ 2$ M W W 1 0 2		10700
10691	DOUBLE ACTION	AB 3/8 PT 1/2	40	300		$1 \ 0 \ 2$ M W W 1 0 2		10701
10692	DOUBLE ACTION CENTER A-B OPEN	AB 3/8 PT 1/2	40	300		$1 \ 0 \ 2$ V V V 1 0 2	CENTER A-B OPEN POS.0-1-2 FIX UTILIZZO ORBITAL MOTOR	10702
10693	SIMPLE ACTION POS.1 FIX	AB 3/8 PT 1/2	40	300		$1 \ 0 \ 2$ V W W 1 0 2	POS. 0-1 FIX POS.2 SPRING RETURN	10703
10694	DOUBLE ACTION POS.1 FIX	AB 3/8 PT 1/2	40	300		$1 \ 0 \ 2$ V W W 1 0 2	POS. 0-1 FIX POS.2 SPRING RETURN	10704
10695	DOUBLE ACTION FLOTTANTE	AB 3/8 PT 1/2	40	300		$3 \ 1 \ 0 \ 2$ V W W 3 1 0 2		10705

10696	SIMPLE ACTION	ABP 1/2 T 3/4	80	300		$1 \ 0 \ 2$ M W W 1 0 2		10706
10697	DOUBLE ACTION	ABP 1/2 T 3/4	80	300		$1 \ 0 \ 2$ M W W 1 0 2		10707

10698	SIMPLE ACTION	ABPT 1"	120	300		$1 \ 0 \ 2$ M W W 1 0 2		10708
10699	DOUBLE ACTION	ABPT 1"	120	300		$1 \ 0 \ 2$ M W W 1 0 2		10709

2 WAY MONOBLOCK CONTROL VALVES



REF	HYDRAULIC FUNCTION	PORTS	Flow L/min	MAX Pressure[bar]	SPOOL TYPE	SPOOL CONTROLL	NOTE	CARRY OVER
10710	LEVA 1 E 2 DOUBLE ACTION	AB 3/8 PT 1/2	40	300				10719
10711	LEVA 1 DOUBLE ACTION	AB 3/8 PT 1/2	40	300				10720
	LEVA 2 SIMPLE ACTION							
10712	LEVA 1 DOUBLE ACTION	AB 3/8 PT 1/2	40	300				10721
	LEVA 2 DOUBLE ACTION							
10713	LEVA 1 DOUBLE ACTION	AB 3/8 PT 1/2	40	300				10722
	LEVA 2 D.E. FLOTTANTE							

10714	LEVA 1 E 2 DOUBLE ACTION	ABP 1/2 T 3/4	80	300				10723
10715	LEVA 1 DOUBLE ACTION	ABP 1/2 T 3/4	80	300				10724
	LEVA 2 SIMPLE ACTION							
10716	LEVA 1 DOUBLE ACTION	ABP 1/2 T 3/4	80	300				10725
	LEVA 2 D.E. FLOTTANTE							

10717	LEVA 1 E 2 DOUBLE ACTION	ABPT 1"	120	300				10726
10718	LEVA 1 DOUBLE ACTION	ABPT 1"	120	300				10727
	LEVA 2 SIMPLE ACTION							

3 WAY MONOBLOCK CONTROL VALVES



REF	HYDRAULIC FUNCTION	PORTS	Flow L/min	MAX Pressure[bar]	SPOOL TYPE	SPOOL CONTROL	NOTE	CARRY OVER
10728	LEVA 1, 2 E 3 DOUBLE ACTION	AB 3/8 PT 1/2	40	300				10737
10729	LEVA 1 E 2 DOUBLE ACTION	AB 3/8 PT 1/2	40	300				10738
	LEVA 3 SIMPLE ACTION							
10730	LEVA 1 E 2 DOUBLE ACTION	AB 3/8 PT 1/2	40	300				10739
	LEVA 3 D.E. FLOTTANTE							
10731	LEVA 1, 2 E 3 DOUBLE ACTION	ABP 1/2 T 3/4	80	300				10740
10732	LEVA 1 E 2 DOUBLE ACTION	ABP 1/2 T 3/4	80	300				10741
	LEVA 3 SIMPLE ACTION							
10734	LEVA 1 E 2 DOUBLE ACTION	ABP 1/2 T 3/4	80	300				10742
	LEVA 3 D.E. FLOTTANTE							
10735	LEVA 1, 2 E 3 DOUBLE ACTION	ABPT 1"	120	300				10743
10736	LEVA 1 E 2 DOUBLE ACTION	ABPT 1"	120	300				10744
	LEVA 3 SIMPLE ACTION							

4 WAY MONOBLOCK CONTROL VALVES



REF	HYDRAULIC FUNCTION	PORTS	Flow L/min	MAX Pressure[bar]	SPOOL TYPE	SPOOL CONTROL	NOTE	CARRY OVER
10745	LEVA 1, 2, 3 E 4 DOUBLE ACTION	AB 3/8 PT 1/2	40	300				10751
10746	LEVA 1, 2 E 3 DOUBLE ACTION	AB 3/8 PT 1/2	40	300				10752
	LEVA 4 SIMPLE ACTION							
10747	LEVA 1, 2 E 3 DOUBLE ACTION	AB 3/8 PT 1/2	40	300				10753
	LEVA 4 D.E. FLOTTANTE							
10748	LEVA 1, 2, 3 E 4 DOUBLE ACTION	ABP 1/2 T 3/4	80	300				10754
10749	LEVA 1, 2, 3 DOUBLE ACTION	ABP 1/2 T 3/4	80	300				10755
	LEVA 4 SIMPLE ACTION							
10750	LEVA 1, 2, 3 E 4 DOUBLE ACTION	ABPT 1"	120	300				10756

5 WAY MONOBLOCK CONTROL VALVES



REF	HYDRAULIC FUNCTION	PORTS	Flow L/min	MAX Pressure[bar]	SPOOL TYPE	SPOOL CONTROL	NOTE	CARRY OVER
10757	LEVA 1, 2, 3, 4 E 5 DOUBLE ACTION	AB 3/8 PT 1/2	40	300				10761
10758	LEVA 1, 2, 3 E 4 DOUBLE ACTION	AB 3/8 PT 1/2	40	300				10762
	LEVA 5 SIMPLE ACTION							
10759	LEVA 1, 2, 3, 4 E 5 DOUBLE ACTION	ABP 1/2 T 3/4	80	300				10763
10760	LEVA 1, 2, 3 E 4 DOUBLE ACTION	ABP 1/2 T 3/4	80	300				10764
	LEVA 5 SIMPLE ACTION							

6 WAY MONOBLOCK CONTROL VALVES



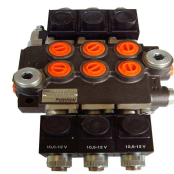
REF	HYDRAULIC FUNCTION	PORTS	Flow L/min	MAX Pressure[bar]	SPOOL TYPE	SPOOL CONTROL	NOTE	CARRY OVER
10765	LEVA 1, 2, 3, 4, 5 E 6 DOUBLE ACTION	AB 3/8 PT 1/2	40	300				10767
10766	LEVA 1, 2, 3, 4, 5 E 6 DOUBLE ACTION	ABP 1/2 T 3/4	80	300				10768

ELECTRICAL MONOBLOCK CONTROL VALVES DE 3/8



REF.	Function	Q [l/m]	Element	PORTS	MAX Pressure[bar]	Volt
10769	D/A	50	1	3 / 8	250	12 DC
10770	D/A	50	2	3 / 8	250	12 DC
10771	D/A	50	3	3 / 8	250	12 DC
10772	D/A	50	4	3 / 8	250	12 DC
10773	D/A	50	5	3 / 8	250	12 DC
10774	D/A	50	6	3 / 8	250	12 DC
10775	D/A	50	7	3 / 8	250	12 DC
10776	D/A	50	1	3 / 8	250	24 DC
10777	D/A	50	2	3 / 8	250	24 DC
10778	D/A	50	3	3 / 8	250	24 DC
10779	D/A	50	4	3 / 8	250	24 DC
10780	D/A	50	5	3 / 8	250	24 DC
10781	D/A	50	6	3 / 8	250	24 DC
10782	D/A	50	7	3 / 8	250	24 DC

ELECTRICAL MONOBLOCK CONTROL VALVES DE 1/2



REF.	Function	Q [l/m]	Element	PORTS	MAX Pressure[bar]	Volt
10783	D/A	80	1	1/2	250	12 DC
10784	D/A	80	2	1/2	250	12 DC
10785	D/A	80	3	1/2	250	12 DC
10786	D/A	80	4	1/2	250	12 DC
10787	D/A	80	5	1/2	250	12 DC
10789	D/A	80	6	1/2	250	12 DC
10790	D/A	80	1	1/2	250	12 DC
10791	D/A	80	2	1/2	250	24 DC
10792	D/A	80	3	1/2	250	24 DC
10793	D/A	80	4	1/2	250	24 DC
10794	D/A	80	5	1/2	250	24 DC
10795	D/A	80	6	1/2	250	24 DC

GEAR PUMPS

GROUP 0

SHAFT: CYLINDIRC Ø 6 mm
MOUNTING FLANGE: STANDARD - aluminium
PILOT: Ø22 mm - 2 holes - Int. 66 mm
PORTS: BSPP THREAD



Clockwise	Anti-Clockwise	CC/REV	Rotation speed		P Max [bar]			Inlet port	Outlet port
			min	Max	P1	P2	P3		
11005	11013	0.25	1000	7000	175	190	200	1/4 BSPP	1/4 BSPP
11006	11014	0.50	1000	7000	175	190	200	1/4 BSPP	1/4 BSPP
11007	11015	0.75	1000	7000	175	190	200	1/4 BSPP	1/4 BSPP
11008	11016	1.00	800	6000	175	190	200	1/4 BSPP	1/4 BSPP
11009	11017	1.25	700	6000	175	190	200	1/4 BSPP	1/4 BSPP
11010	11018	1.50	600	4000	140	160	175	1/4 BSPP	1/4 BSPP
11011	11019	1.75	600	4000	130	150	160	1/4 BSPP	1/4 BSPP
11012	11020	2.00	500	2000	130	15	160	1/4 BSPP	1/4 BSPP

GROUP 0

SHAFT: Ø 8 mm
MOUNTING FLANGE: STANDARD - aluminium
PILOT: Ø22 mm - 2 holes - Int. 32 mm
PORTS: Front and Back



Clockwise	Anti-Clockwise	CC	Rotation speed		P Max [bar]			Inlet port	Outlet port
			min	Max	P1	P2	P3		
11021	11029	0.25	1000	7000	175	190	200	1/4 BSPP	Ø 5.5
11022	11030	0.50	1000	7000	175	190	200	1/4 BSPP	Ø 5.5
11023	11031	0.75	1000	7000	175	190	200	1/4 BSPP	Ø 5.5
11024	11032	1.00	800	6000	175	190	200	1/4 BSPP	Ø 5.5
11025	11033	1.25	700	6000	175	190	200	1/4 BSPP	Ø 5.5
11026	11034	1.50	600	4000	140	160	175	1/4 BSPP	Ø 5.5
11027	11035	1.75	600	4000	130	150	160	1/4 BSPP	Ø 5.5
11028	11036	2.00	500	2000	130	15	160	1/4 BSPP	Ø 5.5

GROUP 0

SHAFT: Ø 8 mm
MOUNTING FLANGE: STANDARD - aluminium
PILOT: Ø22 mm - 2 holes - Int. 32 mm
PORTS: BSPP THREAD



Clockwise	Anti-Clockwise	CC	Rotation speed		P Max [bar]			Inlet port	Outlet port
			min	Max	P1	P2	P3		
11037	11045	0.25	1000	7000	175	190	200	1/4 BSPP	1/4 BSPP
11038	11046	0.50	1000	7000	175	190	200	1/4 BSPP	1/4 BSPP
11039	11047	0.75	1000	7000	175	190	200	1/4 BSPP	1/4 BSPP
11040	11048	1.00	800	6000	175	190	200	1/4 BSPP	1/4 BSPP
11041	11049	1.25	700	6000	175	190	200	1/4 BSPP	1/4 BSPP
11042	11050	1.50	600	4000	140	160	175	1/4 BSPP	1/4 BSPP
11043	11051	1.75	600	4000	130	150	160	1/4 BSPP	1/4 BSPP
11044	11052	2.00	500	2000	130	15	160	1/4 BSPP	1/4 BSPP

GROUP 1

SHAFT: Ø 10 mm
MOUNTING FLANGE: STANDARD - aluminium
PILOT: Ø32 mm - 2 holes - Int. 40 mm
PORTS: Front and Back BSPP



Clockwise	Anti-Clockwise	CC	Rotation speed		P Max [bar]			Inlet port	Outlet port
			min	Max	P1	P2	P3		
11053	11067	0,8	1000	6000	230	250	270	3/8	Ø 9
11054	11068	1,1	1000	6000	230	250	270	3/8	Ø 9
11055	11069	1,3	1000	6000	230	250	270	3/8	Ø 9
11056	11070	1,6	1000	6000	230	250	270	3/8	Ø 9
11057	11071	1,8	1000	6000	230	250	270	3/8	Ø 9
11058	11072	2,1	1000	6000	230	250	270	3/8	Ø 9
11059	11073	2,7	800	5000	210	230	250	3/8	Ø 9
11060	11074	3,2	800	5000	210	230	250	3/8	Ø 9
11061	11075	3,7	800	5000	210	230	250	3/8	Ø 9
11062	11076	4,2	600	4000	210	230	250	3/8	Ø 9
11063	11077	4,8	600	4000	190	210	230	3/8	Ø 9
11064	11078	5,8	600	3000	190	210	230	3/8	Ø 9
11065	11079	7	600	2500	160	190	210	3/8	Ø 9
11066	11080	8	600	2000	160	290	210	3/8	Ø 9

GROUP 1

SHAFT: Ø 10 mm
MOUNTING FLANGE: STANDARD - aluminium
PILOT: Ø32 mm - 2 holes - Int. 40 mm
PORTS: BSPP THREAD



Clockwise	Anti-Clockwise	CC	Rotation speed		P Max [bar]			Inlet port	Outlet port
			min	Max	P1	P2	P3		
11081	11095	0,8	1000	6000	230	250	270	1/4 BSPP	Ø 5.5
11082	11096	1,1	1000	6000	230	250	270	1/4 BSPP	Ø 5.5
11083	11097	1,3	1000	6000	230	250	270	1/4 BSPP	Ø 5.5
11084	11098	1,6	1000	6000	230	250	270	1/4 BSPP	Ø 5.5
11085	11099	1,8	1000	6000	230	250	270	1/4 BSPP	Ø 5.5
11086	11100	2,1	1000	6000	230	250	270	1/4 BSPP	Ø 5.5
11087	11101	2,7	800	5000	210	230	250	1/4 BSPP	Ø 5.5
11088	11102	3,2	800	5000	210	230	250	1/4 BSPP	Ø 5.5
11089	11103	3,7	800	5000	210	230	250	1/4 BSPP	Ø 5.5
11090	11104	4,2	600	4000	210	230	250	1/4 BSPP	Ø 5.5
11091	11105	4,8	600	4000	190	210	230	1/4 BSPP	Ø 5.5
11092	11106	5,8	600	3000	190	210	230	1/4 BSPP	Ø 5.5
11093	11107	7	600	2500	160	190	210	1/4 BSPP	Ø 5.5
11094	11108	8	600	2000	160	290	210	1/4 BSPP	Ø 5.5

GROUP 1
SHAFT: TAPERED 1:8
MOUNTING FLANGE: STANDARD EUROPEAN - aluminium
PILOT: Ø25.4 mm - 4 holes - 52X72 mm
PORTS: TYPE "BOSH" A 4 holes



GROUP 1
SHAFT: TAPERED 1:8
MOUNTING FLANGE: STANDARD EUROPEAN - aluminium
PILOT: Ø25.4 mm - 4 holes - 52X72 mm
PORTS: BSPP THREAD



Clockwise	Anti-Clockwise	CC	Rotation speed		P Max [bar]			Inlet port Filet-Interas	Outlet port Filet-Interas
			min	Max	P1	P2	P3		
11109	11120	1.00	1000	6000	250	270	280	M6 - 30	M6 - 30
11110	11121	1.25	1000	6000	250	270	280	M6 - 30	M6 - 30
11111	11122	1.60	1000	6000	250	270	280	M6 - 30	M6 - 30
11112	11123	2.00	1000	6000	250	270	280	M6 - 30	M6 - 30
11113	11124	2.50	1000	6000	250	270	280	M6 - 30	M6 - 30
11114	11125	3.15	800	5000	250	270	280	M6 - 30	M6 - 30
11115	11126	3.65	800	5000	250	270	280	M6 - 30	M6 - 30
11116	11127	4.20	800	5000	250	270	280	M6 - 30	M6 - 30
11117	11128	5.00	600	4000	250	270	280	M6 - 30	M6 - 30
11118	11129	5.70	600	4000	200	220	250	M6 - 30	M6 - 30
11119	11130	6.10	600	3000	200	220	250	M6 - 30	M6 - 30

Clockwise	Anti-Clockwise	CC	Rotation speed		P Max [bar]			Inlet port	Outlet port
			min	Max	P1	P2	P3		
11131	11142	1.00	1000	6000	250	270	280	3/8	3/8
11132	11143	1.25	1000	6000	250	270	280	3/8	3/8
11133	11144	1.60	1000	6000	250	270	280	3/8	3/8
11134	11145	2.00	1000	6000	250	270	280	3/8	3/8
11135	11146	2.50	1000	6000	250	270	280	3/8	3/8
11136	11147	3.15	800	5000	250	270	280	1/2	3/8
11137	11148	3.65	800	5000	250	270	280	1/2	3/8
11138	11149	4.20	800	5000	250	270	280	1/2	3/8
11139	11150	5.00	600	4000	250	270	280	1/2	3/8
11140	11151	5.70	600	4000	200	220	250	1/2	3/8
11141	11152	6.10	600	3000	200	220	250	1/2	3/8

GROUP 2
SHAFT: TAPERED 1:8
MOUNTING FLANGE: STANDARD EUROPEAN - CAST IRON
PILOT: Ø36,5 mm - 4 holes - 88X114 mm
PORTS: TYPE "EUROPEO" A 4 holes



GROUP 2
SHAFT: TAPERED 1:8
MOUNTING FLANGE: STANDARD EUROPEAN - CAST IRON
PILOT: Ø36,5 mm - 4 holes - 88X114 mm
PORTS: BSPP THREAD



Clockwise	Anti-Clockwise	CC	Rotation speed		P Max [bar]			Inlet port Filet-Interas	Outlet port Filet-Interas
			min	Max	P1	P2	P3		
11153	11166	4	600	4000	270	285	300	M6 - 30	M6 - 30
11154	11167	6	600	4000	270	285	300	M6 - 30	M6 - 30
11155	11168	8	500	4000	270	285	300	M6 - 30	M6 - 30
11156	11169	10	500	4000	270	285	300	M8 - 30	M6 - 30
11157	11170	12	500	4000	270	285	300	M8 - 40	M6 - 30
11158	11171	14	500	4000	250	265	280	M8 - 40	M6 - 30
11159	11172	16	500	4000	250	265	280	M8 - 40	M6 - 30
11160	11173	18	400	3600	250	265	280	M8 - 40	M6 - 30
11161	11174	20	400	3200	220	235	250	M8 - 40	M6 - 30
11162	11175	22	400	3000	220	235	250	M8 - 40	M6 - 30
11163	11176	25	400	3000	200	215	230	M8 - 40	M6 - 30
11164	11177	28	400	2500	180	190	200	M8 - 40	M6 - 30
11165	11178	30	400	2500	180	170	180	M8 - 40	M6 - 30

Clockwise	Anti-Clockwise	CC	Rotation speed		P Max [bar]			Inlet port	Outlet port
			min	Max	P1	P2	P3		
11179	11192	4	600	4000	270	285	300	1/2	3/8
11180	11193	6	600	4000	270	285	300	1/2	3/8
11181	11194	8	500	4000	270	285	300	1/2	3/8
11182	11195	10	500	4000	270	285	300	1/2	3/8
11183	11196	12	500	4000	270	285	300	1/2	3/8
11184	11197	14	500	4000	250	265	280	1/2	3/8
11185	11198	16	500	4000	250	265	280	1/2	3/8
11186	11199	18	400	3600	250	265	280	3/4	1/2
11187	11200	20	400	3200	220	235	250	3/4	1/2
11188	11201	22	400	3000	220	235	250	1"	3/4
11189	11202	25	400	3000	200	215	230	1"	3/4
11190	11203	28	400	2500	180	190	200	1"	3/4
11191	11204	30	400	2500	180	170	180	1"	3/4

GROUP 2
SHAFT: DIN5482 B17X14
MOUNTING FLANGE: STANDARD EUROPEAN - CAST IRON
PILOT: Ø36,5 mm - 4 holes - 88X114 mm
PORTS: TYPE "EUROPEO" A 4 holes



GROUP 2
SHAFT: DIN5482 B17X14
MOUNTING FLANGE: STANDARD GERMANY - CAST IRON
PILOT: Ø50 mm - 2 holes - 60X60 mm
PORTS: TYPE "BOSH" A 4 holes



Clockwise	Anti-Clockwise	CC	Rotation speed		P Max [bar]			Inlet port Filet-Interas	Outlet port Filet-Interas
			min	Max	P1	P2	P3		
11205	11211	12	500	4000	270	285	300	M8 - 40	M6 - 30
11206	11212	14	500	4000	250	265	280	M8 - 40	M6 - 30
11207	11213	16	500	4000	250	265	280	M8 - 40	M6 - 30
11208	11214	18	400	3600	250	265	280	M8 - 40	M6 - 30
11209	11215	20	400	3200	220	235	250	M8 - 40	M6 - 30
11210	11216	22	400	3000	220	235	250	M8 - 40	M6 - 30

Clockwise	Anti-Clockwise	CC	Rotation speed		P Max [bar]			Inlet port	Outlet port
			min	Max	P1	P2	P3		
11217	11226	6	600	4000	270	285	300	M6 - 40	M6 - 35
11218	11227	8	500	4000	270	285	300	M6 - 40	M6 - 35
11219	11228	10	500	4000	270	285	300	M6 - 40	M6 - 35
11220	11229	12	500	4000	270	285	300	M6 - 40	M6 - 35
11221	11230	14	500	4000	250	265	280	M6 - 40	M6 - 35
11222	11231	16	500	4000	250	265	280	M6 - 40	M6 - 35
11223	11232	18	400	3600	250	265	280	M6 - 40	M6 - 35
11224	11233	20	400	3200	220	235	250	M6 - 40	M6 - 35
11225	11234	22	400	3000	220	235	250	M6 - 40	M6 - 35

GROUP 2
 SHAFT: TAPERED 1:8
 MOUNTING FLANGE: STANDARD GERMANY - CAST IRON
 PILOT: Ø50 mm - 2 holes - 60X60 mm
 PORTS: TYPE "BOSH" A 4 holes



GROUP 2
 SHAFT: TAPERED 1:8
 MOUNTING FLANGE: STANDARD GERMANY - CAST IRON
 PILOT: Ø50 mm - 2 holes - 60X60 mm
 PORTS: TYPE "BOSH" A 4 holes



Clockwise	Anti-Clockwise	CC	Rotation speed		P Max [bar]			Inlet port Filet-Interas	Outlet port Filet-Interas
			min	Max	P1	P2	P3		
11235	11244	6	600	4000	270	285	300	M6 - 40	M6 - 35
11236	11245	8	500	4000	270	285	300	M6 - 40	M6 - 35
11237	11246	10	500	4000	270	285	300	M6 - 40	M6 - 35
11238	11247	12	500	4000	270	285	300	M6 - 40	M6 - 35
11239	11248	14	500	4000	250	265	280	M6 - 40	M6 - 35
11240	11249	16	500	4000	250	265	280	M6 - 40	M6 - 35
11241	11250	18	400	3600	250	265	280	M6 - 40	M6 - 35
11242	11251	20	400	3200	220	235	250	M6 - 40	M6 - 35
11243	11252	22	400	3000	220	235	250	M6 - 40	M6 - 35

Clockwise	Anti-Clockwise	CC	Rotation speed		P Max [bar]			Inlet port Filet-Interas	Outlet port Filet-Interas
			min	Max	P1	P2	P3		
11253	11262	6	600	4000	270	285	300	M6 - 40	M6 - 35
11254	11263	8	500	4000	270	285	300	M6 - 40	M6 - 35
11255	11264	10	500	4000	270	285	300	M6 - 40	M6 - 35
11256	11265	12	500	4000	270	285	300	M6 - 40	M6 - 35
11257	11266	14	500	4000	250	265	280	M6 - 40	M6 - 35
11258	11267	16	500	4000	250	265	280	M6 - 40	M6 - 35
11259	11268	18	400	3600	250	265	280	M6 - 40	M6 - 35
11260	11269	20	400	3200	220	235	250	M6 - 40	M6 - 35
11261	11270	22	400	3000	220	235	250	M6 - 40	M6 - 35

GROUP 2
 SHAFT: TAPERED 1:8
 MOUNTING FLANGE: STANDARD BOSH - CAST IRON
 PILOT: Ø80 mm - 4 holes - 72X100 mm
 PORTS: TYPE "BOSH" A 4 holes



GROUP 2
 SHAFT: DIN5482 B17X24
 MOUNTING FLANGE: STANDARD BOSH - CAST IRON
 PILOT: Ø80 mm - 4 holes - 72X100 mm
 PORTS: TYPE "BOSH" A 4 holes



Clockwise	Anti-Clockwise	CC	Rotation speed		P Max [bar]			Inlet port Filet-Interas	Outlet port Filet-Interas
			min	Max	P1	P2	P3		
11271	11280	6	600	4000	270	285	300	M6 - 40	M6 - 35
11272	11281	8	500	4000	270	285	300	M6 - 40	M6 - 35
11273	11282	10	500	4000	270	285	300	M6 - 40	M6 - 35
11274	11283	12	500	4000	270	285	300	M6 - 40	M6 - 35
11275	11284	14	500	4000	250	265	280	M6 - 40	M6 - 35
11276	11285	16	500	4000	250	265	280	M6 - 40	M6 - 35
11277	11286	18	400	3600	250	265	280	M6 - 40	M6 - 35
11278	11287	20	400	3200	220	235	250	M6 - 40	M6 - 35
11279	11288	22	400	3000	220	235	250	M6 - 40	M6 - 35

Clockwise	Anti-Clockwise	CC	Rotation speed		P Max [bar]			Inlet port Filet-Interas	Outlet port Filet-Interas
			min	Max	P1	P2	P3		
11289	11298	6	600	4000	270	285	300	M6 - 40	M6 - 35
11290	11299	8	500	4000	270	285	300	M6 - 40	M6 - 35
11291	11300	10	500	4000	270	285	300	M6 - 40	M6 - 35
11292	11301	12	500	4000	270	285	300	M6 - 40	M6 - 35
11293	11302	14	500	4000	250	265	280	M6 - 40	M6 - 35
11294	11303	16	500	4000	250	265	280	M6 - 40	M6 - 35
11295	11304	18	400	3600	250	265	280	M6 - 40	M6 - 35
11296	11305	20	400	3200	220	235	250	M6 - 40	M6 - 35
11297	11306	22	400	3000	220	235	250	M6 - 40	M6 - 35

GROUP 2
 SHAFT: TAPERED 1:8
 MOUNTING FLANGE: STANDARD BOSH - WITH BEARING
 PILOT: Ø80 mm - 4 holes - 72X100 mm
 PORTS: TYPE "BOSH" A 4 holes



Clockwise	Anti-Clockwise	CC	Rotation speed		P Max [bar]			Inlet port Filet-Interas	Outlet port Filet-Interas
			min	Max	P1	P2	P3		
11307	11315	6	600	4000	270	285	300	M6 - 40	M6 - 35
11308	11316	8	500	4000	270	285	300	M6 - 40	M6 - 35
11309	11317	10	500	4000	270	285	300	M6 - 40	M6 - 35
11310	11318	12	500	4000	270	285	300	M6 - 40	M6 - 35
11311	11319	14	500	4000	250	265	280	M6 - 40	M6 - 35
11312	11320	16	500	4000	250	265	280	M6 - 40	M6 - 35
11313	11321	18	400	3600	250	265	280	M6 - 40	M6 - 35
11314	11322	20	400	3200	220	235	250	M6 - 40	M6 - 35
11315	11323	22	400	3000	220	235	250	M6 - 40	M6 - 35

GROUP 2
SHAFT: DP16/32-30" 9T
MOUNTING FLANGE: SAE A - CAST IRON
PILOT: Ø82,55 mm - 2 holes - 106,4 mm
PORTS: BSPP THREAD



GROUP 2
SHAFT: CYLINDIRC Ø15,85 mm
MOUNTING FLANGE: SAE A - CAST IRON
PILOT: Ø82,55 mm - 2 holes - 106,4 mm
PORTS: BSPP THREAD



Clockwise	Anti-Clockwise	CC	Rotation speed		P Max [bar]			Inlet port	Outlet port
			min	Max	P1	P2	P3		
11323	11333	6	600	4000	270	285	300	1/2	1/2
11324	11334	8	500	4000	270	285	300	3/4	1/2
11325	11335	10	500	4000	270	285	300	3/4	1/2
11326	11336	12	500	4000	270	285	300	3/4	1/2
11327	11337	14	500	4000	250	265	280	3/4	1/2
11328	11338	16	500	4000	250	265	280	3/4	1/2
11329	11339	18	400	3600	250	265	280	3/4	1/2
11330	11340	20	400	3200	220	235	250	3/4	1/2
11331	11341	22	400	3000	220	235	250	3/4	1/2
11332	11342	25	400	3000	220	235	250	1"	3/4

Clockwise	Anti-Clockwise	CC	Rotation speed		P Max [bar]			Inlet port	Outlet port
			min	Max	P1	P2	P3		
11343	11353	6	600	4000	270	285	300	1/2	1/2
11344	11354	8	500	4000	270	285	300	3/4	1/2
11345	11355	10	500	4000	270	285	300	3/4	1/2
11346	11356	12	500	4000	270	285	300	3/4	1/2
11347	11357	14	500	4000	250	265	280	3/4	1/2
11348	11358	16	500	4000	250	265	280	3/4	1/2
11349	11359	18	400	3600	250	265	280	3/4	1/2
11350	11360	20	400	3200	220	235	250	3/4	1/2
11351	11361	22	400	3000	220	235	250	3/4	1/2
11352	11362	25	400	3000	220	235	250	1"	3/4

GROUP 3
SHAFT: TAPERED 1:8
MOUNTING FLANGE: STANDARD EUROPEAN - CAST IRON
PILOT: Ø50,8 mm - 4 holes - 96,5X128 mm
PORTS: TYPE "EUROPEO" A 4 holes



GROUP 3
SHAFT: TAPERED 1:8
MOUNTING FLANGE: STANDARD EUROPEAN - CAST IRON
PILOT: Ø50,8 mm - 4 holes - 96,5X128 mm
PORTS: BSPP THREAD



Clockwise	Anti-Clockwise	CC	Rotation speed		P Max [bar]			Inlet port	Outlet port
			min	Max	P1	P2	P3		
11363	11371	26	600	3000	250	265	280	M10 - 56	M10 - 56
11364	11372	33	500	3000	230	250	270	M10 - 56	M10 - 56
11365	11373	39	500	3000	230	250	270	M10 - 56	M10 - 56
11366	11374	46	500	3000	230	250	270	M10 - 56	M10 - 56
11367	11375	50	500	3000	220	240	260	M10 - 56	M10 - 56
11368	11376	55	400	2800	200	230	250	M10 - 62	M10 - 56
11369	11377	63	400	2800	200	230	250	M10 - 62	M10 - 56
11370	11378	71	400	2600	180	200	220	M10 - 62	M10 - 56

Clockwise	Anti-Clockwise	CC	Rotation speed		P Max [bar]			Inlet port	Outlet port
			min	Max	P1	P2	P3		
11379	11387	26	600	3000	250	265	280	1"	3/4
11380	11388	33	500	3000	230	250	270	1"	3/4
11381	11389	39	500	3000	230	250	270	1"	3/4
11382	11390	46	500	3000	230	250	270	1" 1/4 BSPP	1"
11383	11391	50	500	3000	220	240	260	1" 1/4 BSPP	1"
11384	11392	55	400	2800	200	230	250	1" 1/4 BSPP	1"
11385	11393	63	400	2800	200	230	250	1" 1/4 BSPP	1"
11386	11394	71	400	2600	180	200	220	1" 1/2	1" 1/4

GROUP 3
SHAFT: DP16/32-30" 13T
MOUNTING FLANGE: SAE B - CAST IRON
PILOT: Ø101,6 mm - 2 holes - 146 mm
PORTS: BSPP THREAD



GROUP 3
SHAFT: DP16/32-30" 13T
MOUNTING FLANGE: SAE B - CAST IRON
PILOT: Ø101,6 mm - 2 holes - 146 mm
PORTS: TYPE "EUROPEO" A 4 holes



Clockwise	Anti-Clockwise	CC	Rotation speed		P Max [bar]			Inlet port	Outlet port
			min	Max	P1	P2	P3		
11395	11405	6	600	4000	270	285	300	1/2	1/2
11396	11406	8	500	4000	270	285	300	3/4	1/2
11397	11407	10	500	4000	270	285	300	3/4	1/2
11398	11408	12	500	4000	270	285	300	3/4	1/2
11399	11409	14	500	4000	250	265	280	3/4	1/2
11400	11410	16	500	4000	250	265	280	3/4	1/2
11401	11411	18	400	3600	250	265	280	3/4	1/2
11402	11412	20	400	3200	220	235	250	3/4	1/2
11403	11413	22	400	3000	220	235	250	3/4	1/2
11404	11414	25	400	3000	220	235	250	1"	3/4

Clockwise	Anti-Clockwise	CC	Rotation speed		P Max [bar]			Inlet port	Outlet port
			min	Max	P1	P2	P3		
11415	11425	6	600	4000	270	285	300	1/2	1/2
11416	11426	8	500	4000	270	285	300	3/4	1/2
11417	11427	10	500	4000	270	285	300	3/4	1/2
11418	11428	12	500	4000	270	285	300	3/4	1/2
11419	11429	14	500	4000	250	265	280	3/4	1/2
11420	11430	16	500	4000	250	265	280	3/4	1/2
11421	11431	18	400	3600	250	265	280	3/4	1/2
11422	11432	20	400	3200	220	235	250	3/4	1/2
11423	11433	22	400	3000	220	235	250	3/4	1/2
11424	11434	25	400	3000	220	235	250	1"	3/4

GROUP 3
 SHAFT: CYLINDIRC Ø22,22 mm
 MOUNTING FLANGE: SAE B - CAST IRON
 PILOT: Ø101,6 mm - 2 holes - 146 mm
 PORTS: TYPE "EUROPEO" A 4 holes



GROUP 3
 SHAFT: TAPERED 1:8
 MOUNTING FLANGE: STANDARD GERMANY - CAST IRON
 PILOT: Ø105 mm - 4 holes - 102X145 mm
 PORTS: TYPE "BOSH" A 4 holes



Clockwise	Anti-Clockwise	CC	Rotation speed		P Max [bar]			Inlet port	Outlet port
			min	Max	P1	P2	P3		
11435	11445	6	600	4000	270	285	300	1/2	1/2
11436	11446	8	500	4000	270	285	300	3/4	1/2
11437	11447	10	500	4000	270	285	300	3/4	1/2
11438	11448	12	500	4000	270	285	300	3/4	1/2
11439	11449	14	500	4000	250	265	280	3/4	1/2
11440	11450	16	500	4000	250	265	280	3/4	1/2
11441	11451	18	400	3600	250	265	280	3/4	1/2
11442	11452	20	400	3200	220	235	250	3/4	1/2
11443	11453	22	400	3000	220	235	250	3/4	1/2
11444	11454	25	400	3000	220	235	250	1"	3/4

Clockwise	Anti-Clockwise	CC	Rotation speed		P Max [bar]			Inlet port Fillet-Interas	Outlet port Fillet-Interas
			min	Max	P1	P2	P3		
11455	11463	26	600	3000	250	265	280	20	20
11456	11464	33	500	3000	230	250	270	25	20
11457	11465	39	500	3000	230	250	270	25	20
11458	11466	46	500	3000	230	250	270	33	25
11459	11467	50	500	3000	220	240	260	33	25
11460	11468	55	400	2800	200	230	250	33	25
11461	11469	63	400	2800	200	230	250	33	25
11462	11470	71	400	2600	180	200	220	33	25

PLINED HALF COUPLING

SPLINED COUPLINGS



PUMP FLANGE

RG 90° ELBOW PORT



RGB 90° ELBOW PORT



REF.	PUMP GROUP	Profile DIN 5482	THEET nr.	H
12173	1	25X22	14	14,50
12174	2	25X22	14	22,00
12175	2	25X22	14	22,50
12176	2	28X25	15	22,00
12177	2	28X25	15	22,50
12178	1	35X31	18	14,50
12179	2	35X31	18	22,00
12180	2	35X31	18	22,50
12181	3	35X31	18	26,00
12182	2	40X36	20	22,50
12183	3,5	40X36	20	32,00

REF.	D [mm]	thread
12184	26	3 / 8
12185	30	3 / 8
12186	30	1 / 2
12187	40	1 / 2
12188	40	3 / 4
12189	51	3 / 4
12190	51	1"
12191	56	1"
12192	62	1" 1 / 4
12193	72	1" 1 / 2
12194	92	2" 1 / 2

REF.	D	trehad
12195	30	3 / 8
12196	35	3 / 8
12197	35	1 / 2
12198	40	1 / 2
12199	40	3 / 4
12200	55	3 / 4
12201	55	1"

ORBITAL MOTORS

SERIE WKKM

SHAFT: CYLINDRICAL Ø 16 mm
MOUNTING FLANGE: 3 holes M6
PILOT: Ø31,5 mm
PORTS: AB - LATERAL G3/8
DRAIN PORT: T - Back G1/8



REF	CC	rpm	Torque Nm		P Max [bar]			L/min Max Flow	Max Out Power KW
			Cont	Peak	Cont	Inter	Peak		
10849	8,2	1950	11	21	100	140	200	16	1,80
10850	12,9	1550	16	33	100	140	200	20	2,40
10851	20	1000	25	51	100	140	200	20	2,40
10852	31,6	630	40	64	100	140	160	20	2,40
10853	39,8	500	45	82	90	140	160	20	2,40
10854	50,3	400	46	100	70	140	160	20	1,80

SERIE WKKM

SHAFT: CYLINDRICAL Ø 16 mm
MOUNTING FLANGE: 3 holes M6
PILOT: Ø31,5 mm
PORTS: AB - BACK G3/8
DRAIN PORT: T - Back G1/8



REF	CC	rpm	Torque Nm		P Max [bar]			L/min Max Flow	Max Out Power KW
			Cont	Peak	Cont	Inter	Peak		
10855	8,2	1950	11	21	100	140	200	16	1,80
10856	12,9	1550	16	33	100	140	200	20	2,40
10857	20	1000	25	51	100	140	200	20	2,40
10858	31,6	630	40	64	100	140	160	20	2,40
10859	39,8	500	45	82	90	140	160	20	2,40
10860	50,3	400	46	100	70	140	160	20	1,80

SERIE WKKM

SHAFT: SPLINED Ø 16,5 mm DIN5482 B17X14
MOUNTING FLANGE: 3 holes M6
PILOT: Ø31,5 mm
PORTS: AB - BACK G3/8
DRAIN PORT: T - Back G1/8



REF	CC	rpm	Torque Nm		P Max [bar]			L/min Max Flow	Max Out Power KW
			Cont	Peak	Cont	Inter	Peak		
10861	8,2	1950	11	21	100	140	200	16	1,80
10862	12,9	1550	16	33	100	140	200	20	2,40
10863	20	1000	25	51	100	140	200	20	2,40
10864	31,6	630	40	64	100	140	160	20	2,40
10865	39,8	500	45	82	90	140	160	20	2,40
10866	50,3	400	46	100	70	140	160	20	1,80

SERIE WKKM

SHAFT: CYLINDRICAL Ø 16 mm
MOUNTING FLANGE: oval a 2 holes Ø 9 mm
PILOT: Ø63 mm
PORTS: AB - BACK G3/8
DRAIN PORT: T - Back G1/8



REF	CC	rpm	Torque Nm		P Max [bar]			L/min Max Flow	Max Out Power KW
			Cont	Peak	Cont	Inter	Peak		
10867	8,2	1950	11	21	100	140	200	16	1,80
10868	12,9	1550	16	33	100	140	200	20	2,40
10869	20	1000	25	51	100	140	200	20	2,40
10870	31,6	630	40	64	100	140	160	20	2,40
10871	39,8	500	45	82	90	140	160	20	2,40
10872	50,3	400	46	100	70	140	160	20	1,80

SERIE WKKP

SHAFT: CYLINDRICAL Ø 25 mm
MOUNTING FLANGE: oval a 2 holes Ø 13,5 mm
PILOT: Ø82,5X6 mm
PORTS: AB - LATERAL G3/8
DRAIN PORT: T - Back G1/4



REF	CC	rpm	Torque Nm		P Max [bar]			L/min Max Flow	Max Out Power KW
			Cont	Peak	Cont	Inter	Peak		
10873	25	1600	33	47	175	200	225	40	4,50
10874	36	1560	43	61	175	200	225	50	5,80
10875	50	1210	94	119	175	200	225	60	10,10
10876	80	755	151	195	175	200	225	60	10,20
10877	100	605	193	193	175	200	225	60	10,50
10878	125	486	237	300	175	200	225	60	10,10
10879	160	378	313	370	175	200	225	60	10,10
10880	200	303	366	450	175	200	225	60	10,10
10881	250	242	380	560	175	200	225	60	9,50
10882	315	190	380	580	175	200	225	60	7,60
10883	400	150	390	590	175	200	225	60	6,20
10884	500	120	390	590	140	175	225	60	3,50

SERIE WKKP

SHAFT: SPLINED Ø 23,9 mm SAE 1" 6B
MOUNTING FLANGE: oval a 2 holes Ø 13,5 mm
PILOT: Ø82,5X6 mm
PORTS: AB - LATERAL G3/8
DRAIN PORT: T - Back G1/4



REF	CC	rpm	Torque Nm		P Max [bar]			L/min Max Flow	Max Out Power KW
			Cont	Peak	Cont	Inter	Peak		
10885	25	1600	33	47	175	200	225	40	4,50
10886	36	1560	43	61	175	200	225	50	5,80
10887	50	1210	94	119	175	200	225	60	10,10
10888	80	755	151	195	175	200	225	60	10,20
10889	100	605	193	193	175	200	225	60	10,50
10890	125	486	237	300	175	200	225	60	10,10
10891	160	378	313	370	175	200	225	60	10,10
10892	200	303	366	450	175	200	225	60	10,10
10893	250	242	380	560	175	200	225	60	9,50
10894	315	190	380	580	175	200	225	60	7,60
10895	400	150	390	590	175	200	225	60	6,20
10896	500	120	390	590	140	175	225	60	3,50

SERIE WKKR

SHAFT: CYLINDRICAL Ø 25 mm
 MOUNTING FLANGE: oval a 2 holes Ø 13,5 mm
 PILOT: Ø82,5X6 mm
 PORTS: AB - LATERAL G3/8
 DRAIN PORT: T - Back G1/4



REF	CC	rpm	Torque Nm		P Max [bar]			L/min Max Flow	Max Out Power KW
			Cont	Peak	Cont	Inter	Peak		
10897	50	775	10,1	17	140	175	225	40	7,00
10898	80	750	19,5	27	175	200	225	60	12,50
10899	100	600	24	32	175	200	225	60	13,00
10900	125	475	30	37	175	200	225	60	12,50
10901	160	375	39	46	175	200	225	60	11,50
10902	200	300	39	56	140	175	225	60	9,00
10903	250	240	39	71	100	175	225	60	6,50
10904	315	190	39	83	90	140	210	60	6,00
10905	400	150	38	87	70	115	175	60	4,80

SERIE WKKR

SHAFT: SPLINED Ø 23,9 mm SAE 1" 6B
 MOUNTING FLANGE: oval a 2 holes Ø 13,5 mm
 PILOT: Ø82,5X6 mm
 PORTS: AB - LATERAL G3/8
 DRAIN PORT: T - Back G1/4



REF	CC	rpm	Torque Nm		P Max [bar]			L/min Max Flow	Max Out Power KW
			Cont	Peak	Cont	Inter	Peak		
10906	50	775	10,1	17	140	175	225	40	7,00
10907	80	750	19,5	27	175	200	225	60	12,50
10908	100	600	24	32	175	200	225	60	13,00
10909	125	475	30	37	175	200	225	60	12,50
10910	160	375	39	46	175	200	225	60	11,50
10911	200	300	39	56	140	175	225	60	9,00
10912	250	240	39	71	100	175	225	60	6,50
10913	315	190	39	83	90	140	210	60	6,00
10914	400	150	38	87	70	115	175	60	4,80

SERIE WKKR

SHAFT: CYLINDRICAL Ø 32 mm
 MOUNTING FLANGE: oval a 2 holes Ø 13,5 mm
 PILOT: Ø82,5X6 mm
 PORTS: AB - LATERAL G3/8
 DRAIN PORT: T - Back G1/4



REF	CC	rpm	Torque Nm		P Max [bar]			L/min Max Flow	Max Out Power KW
			Cont	Peak	Cont	Inter	Peak		
10915	50	775	10,1	17	140	175	225	40	7,00
10916	80	750	19,5	27	175	200	225	60	12,50
10917	100	600	24	32	175	200	225	60	13,00
10918	125	475	30	37	175	200	225	60	12,50
10919	160	375	39	46	175	200	225	60	11,50
10920	200	300	39	56	140	175	225	60	9,00
10921	250	240	39	71	100	175	225	60	6,50
10922	315	190	39	83	90	140	210	60	6,00
10923	400	150	38	87	70	115	175	60	4,80

SERIE WKKR

SHAFT: millerighe Ø 31,75 mm 1"1/4 14T DP 12/24
 MOUNTING FLANGE: oval a 2 holes Ø 13,5 mm
 PILOT: Ø82,5X6 mm
 PORTS: AB - LATERAL G3/8
 DRAIN PORT: T - Back G1/4



REF	CC	rpm	Torque Nm		P Max [bar]			L/min Max Flow	Max Out Power KW
			Cont	Peak	Cont	Inter	Peak		
10924	50	775	10,1	17	140	175	225	40	7,00
10925	80	750	19,5	27	175	200	225	60	12,50
10926	100	600	24	32	175	200	225	60	13,00
10927	125	475	30	37	175	200	225	60	12,50
10928	160	375	39	46	175	200	225	60	11,50
10929	200	300	39	56	140	175	225	60	9,00
10930	250	240	39	71	100	175	225	60	6,50
10931	315	190	39	83	90	140	210	60	6,00
10932	400	150	38	87	70	115	175	60	4,80

SERIE WKKK

SHAFT: CYLINDRICAL Ø 32 mm
 MOUNTING FLANGE: QUADRATA a 4 holes Ø 13,5 mm
 PILOT: Ø82,5X6 mm
 PORTS: AB - LATERAL G1/2
 DRAIN PORT: T - Laterale G1/4



REF	CC	rpm	Torque Nm		P Max [bar]			L/min Max Flow	Max Out Power KW
			Cont	Peak	Cont	Inter	Peak		
10933	80	810	20	26	210	250	300	65	16
10934	10	750	25	32	210	250	300	75	18
10935	125	600	32	40	210	250	300	75	18
10936	160	470	34	51	210	250	300	75	16
10937	200	375	40	65	210	250	300	75	14
10938	250	300	45	69	210	250	300	75	13
10939	315	240	54	84	210	250	300	75	12
10940	400	185	58	85	210	250	300	75	10
10941	475	160	58	85	210	250	300	75	8

SERIE WKKT

SHAFT: CYLINDRICAL Ø 40 mm
 MOUNTING FLANGE: QUADRATA a 4 holes Ø 14 mm
 PILOT: Ø125x8 mm
 PORTS: AB - LATERAL G3/4
 DRAIN PORT: T - Laterale G1/4



REF	CC	rpm	Torque Nm		P Max [bar]			L/min Max Flow	Max Out Power KW
			Cont	Peak	Cont	Inter	Peak		
10942	160	625	47	66	200	240	280	100	26,50
10943	200	625	59	82	200	240	280	125	33,50
10944	250	500	73	102	200	240	280	125	33,50
10945	315	380	95	133	200	240	280	125	33,50
10946	400	305	108	144	180	210	240	125	30,00
10947	500	240	122	160	160	180	210	125	26,50
10948	630	206	123	161	140	160	190	125	24,30
10949	800	172	125	165	115	130	160	125	20,20

SERIE WKKSS

SHAFT: SPLINED Z=12 DP=12/24
 MOUNTING FLANGE: ROTONDA a 4 holes Ø 11 mm
 PILOT: Ø100X6 mm
 PORTS: AB - LATERAL G1/2
 DRAIN PORT: T - Laterale G1/4



REF	CC	rpm	Torque Nm		P Max [bar]			L/min Max Flow	Max Out Power KW
			Cont	Peak	Cont	Inter	Peak		
10950	80	810	20	26	210	250	300	65	16
10951	10	750	25	32	210	250	300	75	18
10952	125	600	32	40	210	250	300	75	18
10953	160	470	34	51	210	250	300	75	16
10954	200	375	40	65	210	250	300	75	14
10955	250	300	45	69	210	250	300	75	13
10956	315	240	54	84	210	250	300	75	12
10957	400	185	58	85	210	250	300	75	10

SERIE WKKTS

SHAFT: SPLINED Z=16 DP=12/24
 MOUNTING FLANGE: ROTONDA a 4 holes Ø 14 mm
 PILOT: Ø125X6 mm
 PORTS: AB - LATERAL G1/2
 DRAIN PORT: T - Laterale G1/4



REF	CC	rpm	Torque Nm		P Max [bar]			L/min Max Flow	Max Out Power KW
			Cont	Peak	Cont	Inter	Peak		
10958	160	625	47	66	200	240	280	100	26,50
10959	200	625	59	82	200	240	280	125	33,50
10960	250	500	73	102	200	240	280	125	33,50
10961	315	380	95	133	200	240	280	125	33,50
10962	400	305	108	144	180	210	240	125	30,00

GEAR MOTORS

GROUP 2

SHAFT: TAPERED 1:8
MOUNTING FLANGE: EUROPEAN STANDARD - CAST IRON
PILOT: Ø36,5 mm - 4 holes - 88X114 mm
PORTA: TYPE "EUROPEO" A 4 holes



GROUP 3

SHAFT: TAPERED 1:8
MOUNTING FLANGE: EUROPEAN STANDARD - CAST IRON
PILOT: Ø50,8 mm - 4 holes - 96,5X128 mm
PORTA: TYPE "EUROPEO" A 4 holes



REF	CC	RPM		P Max [bar]	IN	OUT
		min	Max			
10963	6,3	650	3500	200	M6 - 30	M6 - 30
10964	8,2	650	3500	200	M6 - 30	M6 - 30
10965	10	650	3500	200	M6 - 30	M6 - 30
10966	11	650	3500	200	M8 - 30	M6 - 30
10967	12	650	3500	200	M8 - 40	M6 - 30
10968	14	650	3500	200	M8 - 40	M6 - 30
10969	15	650	3500	200	M8 - 40	M6 - 30
10970	16	650	3500	200	M8 - 40	M6 - 30
10971	19	650	3500	180	M8 - 40	M6 - 30
10972	22	650	3500	180	M8 - 40	M6 - 30
10973	25	650	3500	160	M8 - 40	M6 - 30

REF	CC	RPM		P Max [bar]	IN	OUT
		min	Max			
10974	22	500	2500	200	M10 - 56	M10 - 56
10975	25	500	2500	200	M10 - 56	M10 - 56
10976	28	500	2500	200	M10 - 56	M10 - 56
10977	32	500	2500	200	M10 - 56	M10 - 56
10978	36	500	2300	200	M10 - 56	M10 - 56
10979	42	500	2300	200	M10 - 62	M10 - 56
10980	46	500	2100	200	M10 - 62	M10 - 56
10981	50	500	2100	200	M10 - 62	M10 - 56
10982	52	500	1750	200	M10 - 62	M10 - 56

HYDRAULIC STEERING UNIT

OPEN CENTERS WITH VALVES

TYPE SPC ...ON



REF.	CC	Q [l/m]	INPUT P. [bar]	Relief P. [bar]	TYPE
10983	50	4	160	60	WITH VALVE
10984	63	6	160	70	WITH VALVE
10985	80	8	160	80	WITH VALVE
10986	100	10	160	100	WITH VALVE
10987	125	130	160	120	WITH VALVE
10988	160	160	160	140	WITH VALVE
10989	200	20	160	150	WITH VALVE
10990	250	25	160	160	WITH VALVE
10991	280	28	160	160	WITH VALVE
10992	315	32	160	160	WITH VALVE
10993	400	40	160	160	WITH VALVE

OPEN CENTERS WITH VALVES

TYPE SPC ...LS



REF.	CC	Q [l/m]	INPUT P. [bar]	Relief P. [bar]	TYPE
10997	50	5	160	60	LOAD SENSING
10998	80	8	160	70	LOAD SENSING
10999	100	10	160	80	LOAD SENSING
11000	125	13	160	100	LOAD SENSING
11001	160	16	160	120	LOAD SENSING
11002	200	20	160	140	LOAD SENSING
11003	250	25	160	150	LOAD SENSING
11004	320	32	160	160	LOAD SENSING

HYDRAULIC BREAK

HYDRAULIC BREAK FOR VNK P/R/S MOTORS



REF.	TYPE
10994	WKK P/R
10995	WKK S

PRIORITY VALVE



REF.	TYPE
10996	DINAMIC SIGNAL

PTO GEARBOXES

PTO GEARBOX GROUP 2

SERIES WKNPM60S1

PTO: MALE 1" 3/8 DIN 9611



REF.	RATIO	RPM		BODY	POWER [KW]
		N1	N2		
13620	1:1,5	540	810	aluminium	10
13621	1:2,0	540	1080	aluminium	10
13622	1:2,5	540	1350	aluminium	10
12152	1:3,0	540	1680	aluminium	10
12155	1:3,5	540	1836	aluminium	10
13623	1:3,8	540	2052	aluminium	10

PTO GEARBOX GROUP 2

SERIES WKN PM60S2

PTO: FEMALE 1" 3/8 DIN 9611



REF.	RATIO	RPM		BODY	POWER [KW]
		N1	N2		
13624	1:1,5	540	810	aluminium	10
13625	1:2,0	540	1080	aluminium	10
13626	1:2,5	540	1350	aluminium	10
12153	1:3,0	540	1680	aluminium	10
12156	1:3,5	540	1836	aluminium	10
13627	1:3,8	540	2052	aluminium	10

PTO GEARBOX GROUP 2

SERIES WKN PM60S3

PTO: FEMALE 1" 3/8 DIN 9611 SHORT



REF.	RATIO	RPM		BODY	POWER [KW]
		N1	N2		
13628	1:1,5	540	810	aluminium	10
13629	1:2,0	540	1080	aluminium	10
13630	1:2,5	540	1350	aluminium	10
13631	1:3,0	540	1680	aluminium	10
13632	1:3,5	540	1836	aluminium	10
13633	1:3,8	540	2052	aluminium	10

PTO GEARBOX GROUP 2

SERIES WKN PM60S4

PTO: FEMALE 1" 3/8 DIN 9611 + TIGHTENING



REF.	RATIO	RPM		BODY	POWER [KW]
		N1	N2		
13634	1:1,5	540	810	aluminium	10
13635	1:2,0	540	1080	aluminium	10
13636	1:2,5	540	1350	aluminium	10
12154	1:3,0	540	1680	aluminium	10
12157	1:3,5	540	1836	aluminium	10
12158	1:3,8	540	2052	aluminium	10

PTO GEARBOX GROUP 3

SERIES WKN PM70S1

PTO: MALE 1" 3/8 DIN 9611



REF.	RATIO	RPM		BODY	POWER [KW]
		N1	N2		
13637	1:1,5	540	810	aluminium	20
13638	1:2,0	540	1080	aluminium	20
13639	1:2,5	540	1350	aluminium	20
12159	1:3,0	540	1680	aluminium	20
12162	1:3,5	540	1836	aluminium	20
13640	1:3,8	540	2052	aluminium	20

PTO GEARBOX GROUP 3

SERIES WKN PM0S2

PTO: FEMALE 1" 3/8 DIN 9611



REF.	RATIO	RPM		BODY	POWER [KW]
		N1	N2		
13641	1:1,5	540	810	aluminium	20
13642	1:2,0	540	1080	aluminium	20
13643	1:2,5	540	1350	aluminium	20
12160	1:3,0	540	1680	aluminium	20
12163	1:3,5	540	1836	aluminium	20
13644	1:3,8	540	2052	aluminium	20

PTO GEARBOX GROUP 3

SERIES WKN PM70S3

PTO: FEMALE 1" 3/8 DIN 9611 SHORT

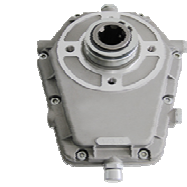


REF.	RATIO	RPM		BODY	POWER [KW]
		N1	N2		
13645	1:1,5	540	810	aluminium	20
13646	1:2,0	540	1080	aluminium	20
13647	1:2,5	540	1350	aluminium	20
13648	1:3,0	540	1680	aluminium	20
13649	1:3,5	540	1836	aluminium	20
13650	1:3,8	540	2052	aluminium	20

PTO GEARBOX GROUP 3

SERIES WKN PM70S4

PTO: FEMALE 1" 3/8 DIN 9611 + TIGHTENING



REF.	RATIO	RPM		BODY	POWER [KW]
		N1	N2		
13651	1:1,5	540	810	aluminium	20
13652	1:2,0	540	1080	aluminium	20
13653	1:2,5	540	1350	aluminium	20
12161	1:3,0	540	1680	aluminium	20
12164	1:3,5	540	1836	aluminium	20
12165	1:3,8	540	2052	aluminium	20

PTO GEARBOX GROUP 3

SERIES WKN PMB70S1

PTO: MALE 1" 3/8 DIN 9611



REF.	RATIO	RPM		BODY	POWER [KW]
		N1	N2		
13654	1:1,5	540	810	CAST IRON	37
13655	1:2,0	540	1080	CAST IRON	37
13656	1:2,5	540	1350	CAST IRON	37
13657	1:3,0	540	1680	CAST IRON	37
13658	1:3,5	540	1836	CAST IRON	37
13659	1:3,8	540	2052	CAST IRON	37

PTO GEARBOX GROUP 3

SERIES WKN PMB0S2

PTO: FEMALE 1" 3/8 DIN 9611



REF.	RATIO	RPM		BODY	POWER [KW]
		N1	N2		
13660	1:1,5	540	810	CAST IRON	37
13661	1:2,0	540	1080	CAST IRON	37
13662	1:2,5	540	1350	CAST IRON	37
13663	1:3,0	540	1680	CAST IRON	37
13664	1:3,5	540	1836	CAST IRON	37
13665	1:3,8	540	2052	CAST IRON	37

PTO GEARBOX GROUP 3

SERIES WKN PMB70S3

PTO: FEMALE 1" 3/8 DIN 9611 SHORT



REF.	RATIO	RPM		BODY	POWER [KW]
		N1	N2		
13666	1:1,5	540	810	CAST IRON	37
13667	1:2,0	540	1080	CAST IRON	37
13668	1:2,5	540	1350	CAST IRON	37
13669	1:3,0	540	1680	CAST IRON	37
13670	1:3,5	540	1836	CAST IRON	37
13671	1:3,8	540	2052	CAST IRON	37

PTO GEARBOX GROUP 3

SERIES WKN PMB70S4

PTO: FEMALE 1" 3/8 DIN 9611 + TIGHTENING



REF.	RATIO	RPM		BODY	POWER [KW]
		N1	N2		
13672	1:1,5	540	810	CAST IRON	37
13673	1:2,0	540	1080	CAST IRON	37
13674	1:2,5	540	1350	CAST IRON	37
13675	1:3,0	540	1680	CAST IRON	37
13676	1:3,5	540	1836	CAST IRON	37
13677	1:3,8	540	2052	CAST IRON	37

MOTOR SPEED REDUCER

MOTOR SPEED REDUCER



REF.	RATIO	RPM		BODY	POWER [KW]
		N1	N2		
13678	1:1,5	300	200	aluminium	10
13679	1:2,0	400	200	aluminium	10
13680	1:2,5	500	200	aluminium	10
13681	1:3,0	600	200	aluminium	10
13682	1:3,5	700	200	aluminium	10
13683	1:3,8	760	200	aluminium	10

PUMP SUPPORT

SUPPORT CILINDRICAL SHAFT



REF.	TYPE	POMPA	CARICO ASSIALE	CARICO RADIALE	ALBERO
12166	1	GR 1	90 daN	75 daN	CILINDRICO
12167	2	GR 2	110 daN	130 daN	CILINDRICO
12168	3	GR 3	140 daN	245 daN	CILINDRICO

ELECTROMAGNETIC COUPLING

ELECTROMAGNETIC CLUTCH



REF.	Static Torque	Currente [A]		Electric absorption	POWER [KW]
		20°C	120°C		
13684	125 Nm	3,33	2	12 V DC	40
13685	125 Mn	1,26	0,77	24 V DC	30

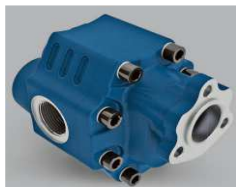
MECHANICAL COUPLING

MECHANICAL COUPLING



REF.	PUMPS	Rotation	Torque	RPM	P MAX KW	Axial load
12169	1-2	REV	9 daNm	2000	30	120
12170	2-3	REV	18,5 daNm	2700	40	160
12171	2-3	DX	18,5 daNm	2700	40	160
12172	2-3	SX	18,5 daNm	2700	40	160

GROUP 35 SERIES UNI



REF.	ROTATION	CC		MAX Continuous P. [Bar]	Max Continuous Speed Rpm
		CC	LT (1500rpm)		
12456	BD	63,5	95,25	250	1800
12457	BD	80,3	120,45	230	1800
12458	BD	90,2	135,3	230	1800
12459	BD	114,5	171,75	205	1800

GROUP 40 SERIES UNI



REF.	ROTATION	CC		MAX Continuous P. [Bar]	Max Continuous Speed Rpm
		CC	LT (1500rpm)		
12472	DX	63,2	94,8	280	1800
12473	SX				
12474	DX	73,1	109,65	275	1800
12475	SX				
12476	DX	87,25	130,87	265	1800
12477	SX				
12478	DX	108,9	163,35	240	1800
12479	SX				
12480	DX	132,95	199,42	230	1500
12481	SX				
12482	DX	151,1	226,65	180	1500
12483	SX				

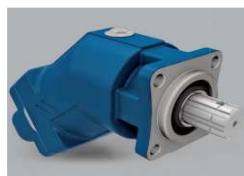
GROUP 40 SERIES ISO



REF.	ROTATION	CC		MAX Continuous P. [Bar]	Max Continuous Speed Rpm
		CC	LT (1500rpm)		
12460	DX	63,2	94,8	280	1800
12461	SX				
12462	DX	73,1	109,65	275	1800
12463	SX				
12464	DX	87,25	130,87	265	1800
12465	SX				
12466	DX	108,9	163,35	240	1800
12467	SX				
12468	DX	132,95	199,42	230	1500
12469	SX				
12470	DX	151,1	226,65	180	1500
12471	SX				

PISTON PUMPS

BENT AXIS ISO SERIES



REF.	ROTATION	CC		Max Continuous Pressure [Bar]	Max Continuous Speed Rpm
		CC	LT (1500rpm)		
12491	DX	21,9	32,85	300	2920
12492	SX				
12493	DX	32,9	49,35	300	2890
12494	SX				
12495	DX	45,6	68,4	300	2550
12496	SX				
12497	DX	56	84	300	2300
12498	SX				
12499	DX	64,5	96,75	300	2300
12500	SX				
12501	DX	80,4	120,6	300	2135
12502	SX				
12503	DX	106,7	160	300	1850
12504	SX				

QUICK RELEASE COUPLING

QRC POPPET TYPES

VSA SERIE ISO 7241/A BSPP



REF. MALE	REF. FEMALE	THREAD
12226	12232	1 / 4
12227	12233	3 / 8
12228	12234	1 / 2
12229	12235	3 / 4
12230	12236	1"
12231	12237	1" 1/4

QRC BALL TYPES

VSA SERIE ISO 7241/A BSPP



REF. MALE	REF. FEMALE	THREAD
12238	12243	1 / 4
12239	12244	3 / 8
12240	12245	1 / 2
12241	12246	3 / 4
12242	12247	1"

QRC

TYPE PUSH - PULL



REF. MALE	REF. FEMALE	THREAD
12248	12250	1/2 GAS
12249	12251	1/2 NPT

QRC

TYPE PUSH - PULL

QRC MALE UNDER PRESSURE



REF. MALE	REF. FEMALE	THREAD
12252	12255	1/2 GAS
12253	12256	1/2 NPT
12254	12257	3/4 UNF

QRC

TYPE PUSH - PULL

Innestabilità:

MALE in pressione
PER TUBO RIGIDO



REF. MALE	REF. FEMALE	THREAD
12258	12264	18X1,5 FEM
12259	12265	1/2 GAS FEM
12260	12266	1/2 NPT FEM
12261	12267	3/4 UNF FEM
12262	12268	22X1,5 MAS
12263	12269	3/8 GAS MAS

QRC BULKHEAD TYPES SERIES ISO 7241/A



REF. MALE	REF. FEMALE	THREAD
12270	12273	16X1,5
12271	12274	18X1,5
12272	12275	22X1,5

QRC SCREW TYPES



REF. MALE	REF. FEMALE	THREAD
12276	12281	1 / 4 GAS
12277	12282	3 / 8 GAS
12278	12283	1 / 2 GAS
12279	12284	3 / 4 GAS
12280	12285	1" GAS
12281	12286	22X1,5

QRC SCREW TYPES



REF. MALE	REF. FEMALE	THREAD
13612	13617	1 / 4
13613	13618	3 / 8
13614	13619	1 / 2
13615	13620	3 / 4
13616	13621	1"

QRC



REF. MALE	REF. FEMALE	THREAD
12287	12293	1 / 4
12288	12294	3 / 8
12289	12295	1 / 2
12290	12296	3 / 4
12291	12297	1"
12292	12298	1" 1/4

QRC BULKHEAD TYOES



REF. MALE	REF. FEMALE	THREAD
12299	12303	16X1,5
12300	12304	18X1,5
12301	12305	22X1,5
12302	12306	26X1,5

PLASTIC PLUGS MALE



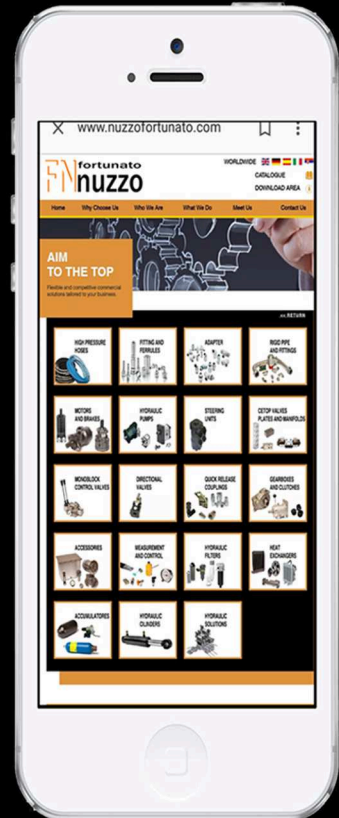
REF. MALE	THREAD	COLOR
12307	1/4	RED
12308	3/8	
12309	1/2	
12310	3/4	
12311	1"	
12312	1/4	BLUE
12313	3/8	
12314	1/2	
12315	3/4	
12316	1"	

PLASTIC PLUG FEMALE



REF. FEMALE	THREAD	COLOR
12317	1 / 4	RED
12318	3 / 8	
12319	1 / 2	
12320	3 / 4	
12321	1"	
12322	1 / 4	BLUE
12323	3 / 8	
12324	1 / 2	
12325	3 / 4	
12326	1"	

CATALOG
ON-LINE



info@nuzzofortunato.com
www.nuzzofortunato.com